

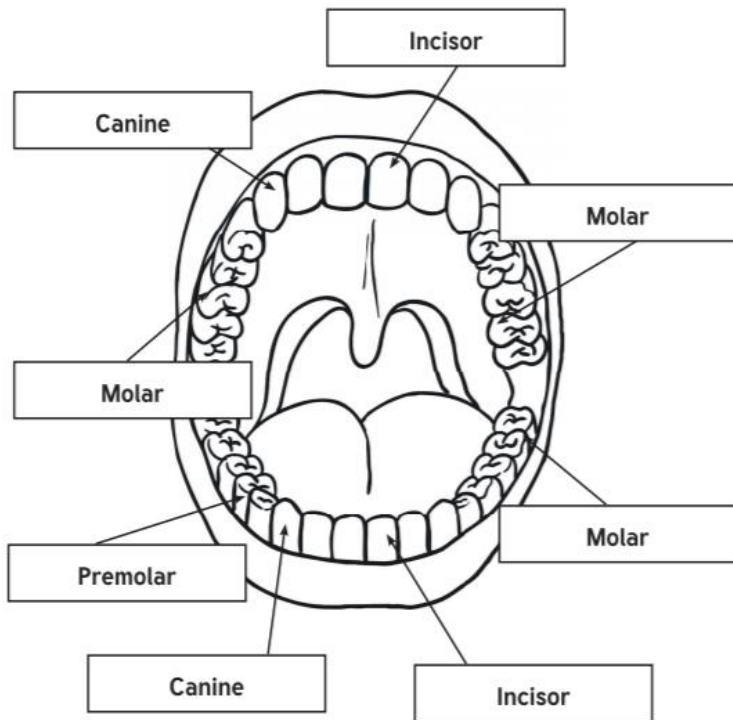
Science: Animals Including Humans: Teeth and Digestion Year 4

We will be learning to ...

... describe the simple functions of the basic parts of the digestive system in humans

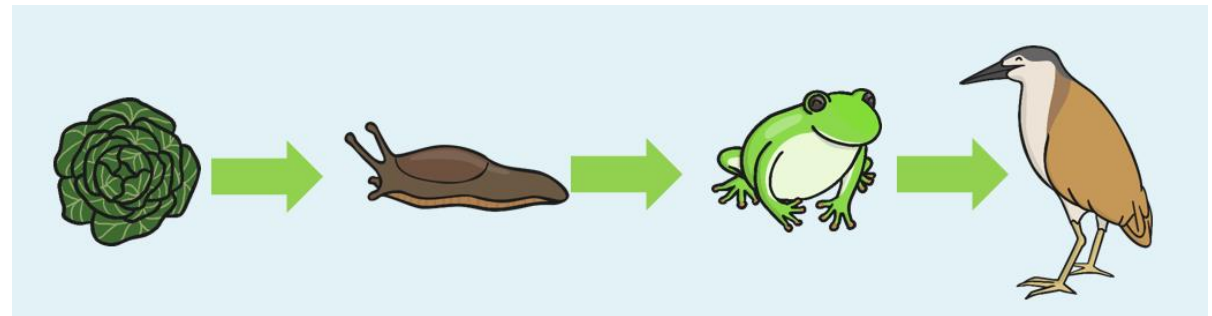
... identify the different types of teeth in humans and their simple functions

... construct and interpret a variety of food chains, identifying producers, predators and prey.



tooth	function (job)
incisor	cutting food
canine	ripping and tearing food
molar	crushing and grinding food

Food Chains



producer

primary consumer

secondary consumer

tertiary consumer

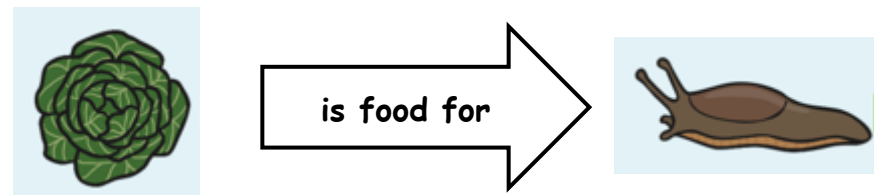
prey to frog

prey to bird

predator to frog

predator to slug

In a food chain, the arrow means is food for.



Different animals have different teeth and ways of eating depending on their diet.

Digestion begins in the **mouth**. The teeth help break down the food into smaller pieces.

The **oesophagus** connects your mouth and stomach. It has muscles within it that work in waves to move the food you have eaten down into your stomach.

The **stomach** is a stretchy sack where food is broken down by acids and enzymes. Once it is broken down, it becomes a substance called chyme. It also connects to other parts of the digestive system.

The **small intestine** is a stretchy tube. It breaks down the food mixture even more so your body can absorb all the vitamins, minerals, proteins carbohydrates and fats.

All the food material that is still unwanted passes through the **large intestine**. It is here that any last water or minerals are absorbed into the blood.

Our mouths contain **saliva** to help us to chew and swallow foods.

